

安泰（霸州）特种粉业有限公司

Advanced Technology (Bazhou) Special Powder Co., Ltd

2018-01-22

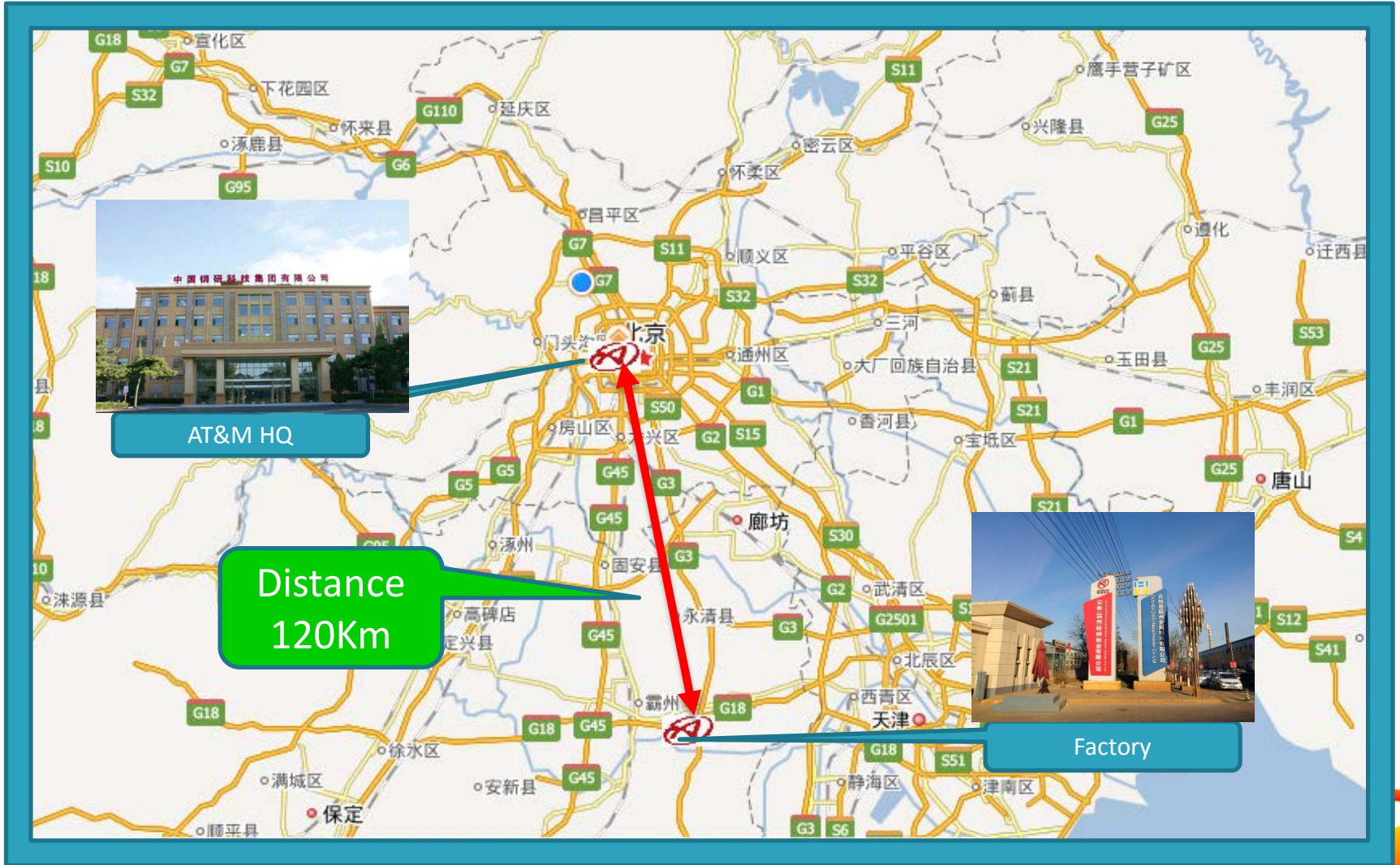


Company Introduction

Advanced Technology (Bazhou) Special Powder Co., Ltd was founded in 2016 HeBei BaZhou. It is One branch companies of AT&M holdings, The original was Powder Metallurgy Research Dep. of AT&M.

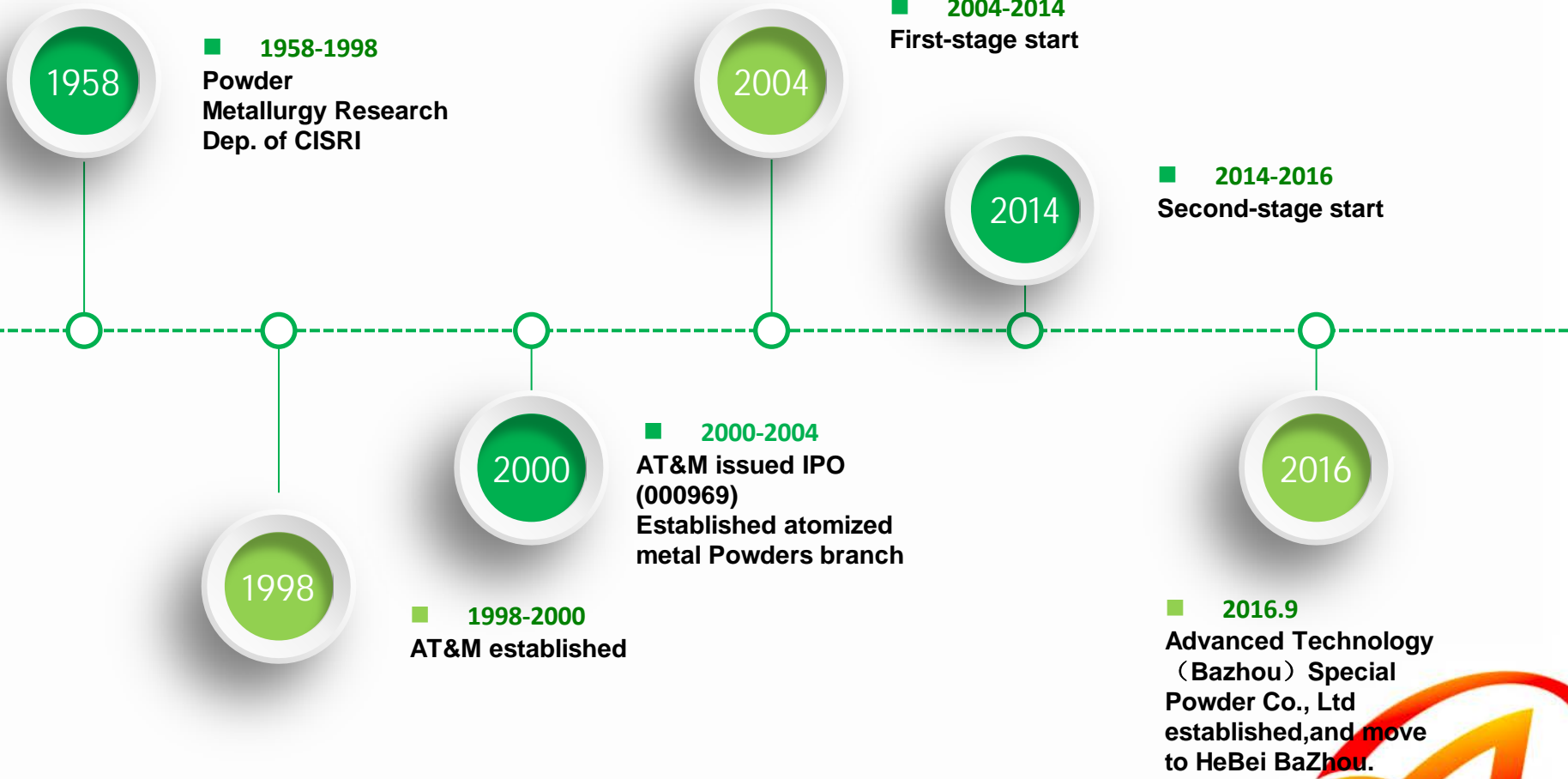


Location



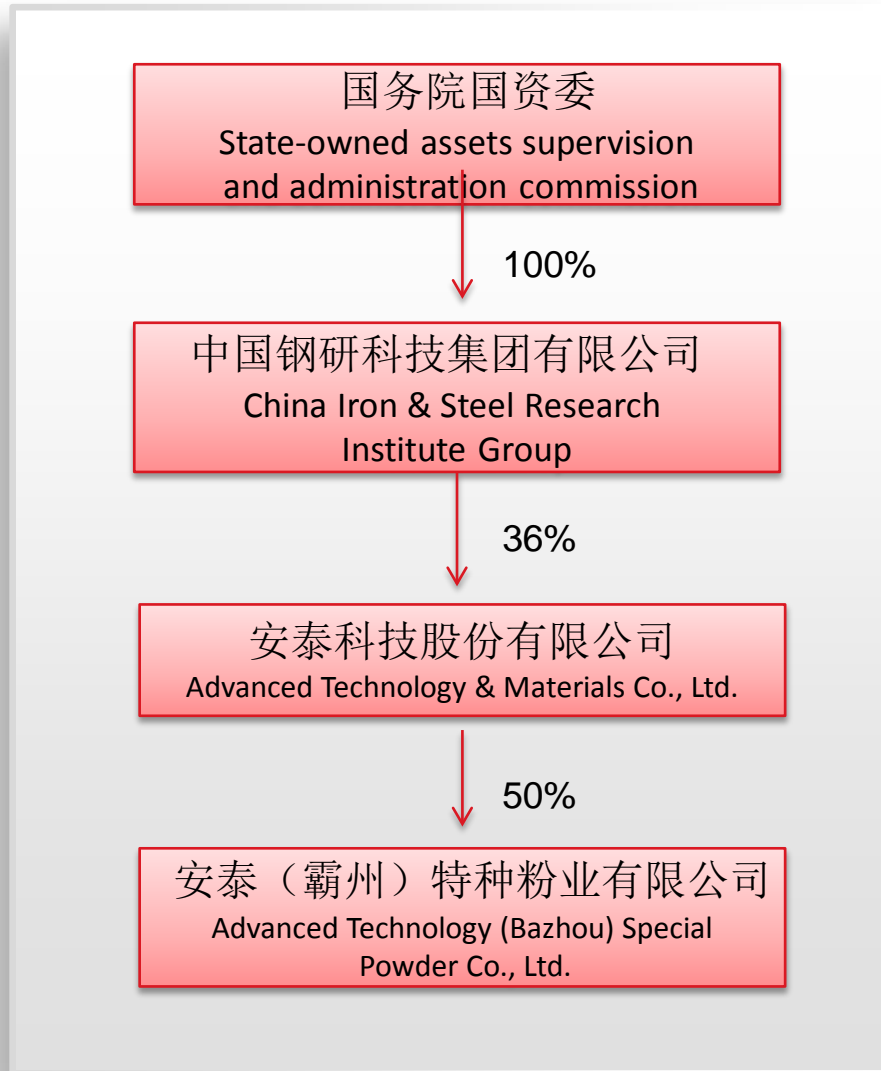


Development Course



Holding Structure

Mixed-ownership,
Key employee shareholding
10%





Management Team



Jiang Zhongmin

General Manager



Ma Hongqiu

**Vice General Manager
(Technology)**



Han Dehai

**Vice General Manager
(Market)**



Zhao Yan

Finance manager



Meng Lingbing

R&D Manager

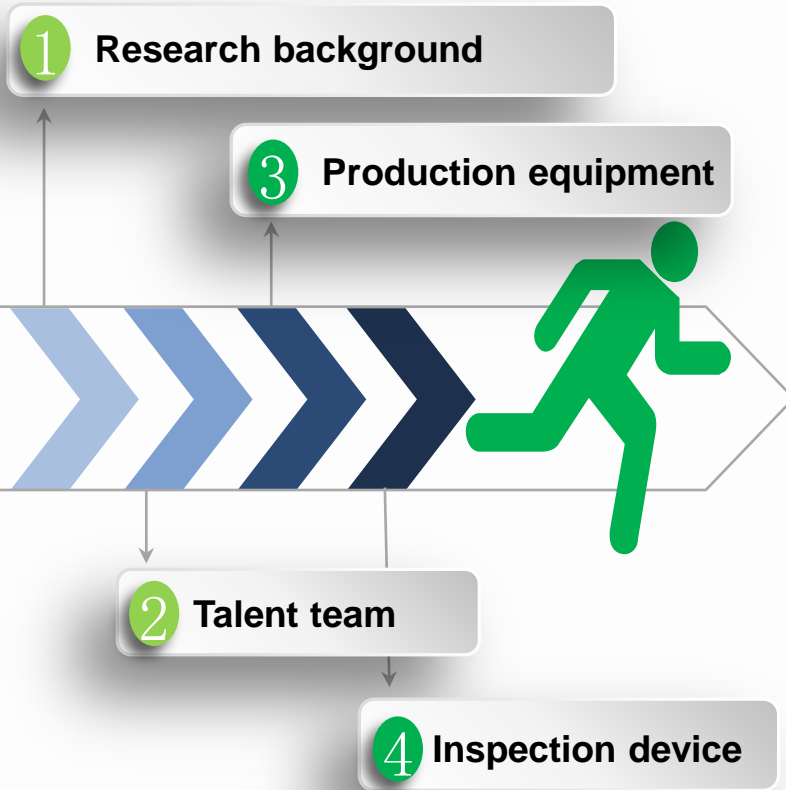


Zhang Jun

Marketing Manager



Our Advantage

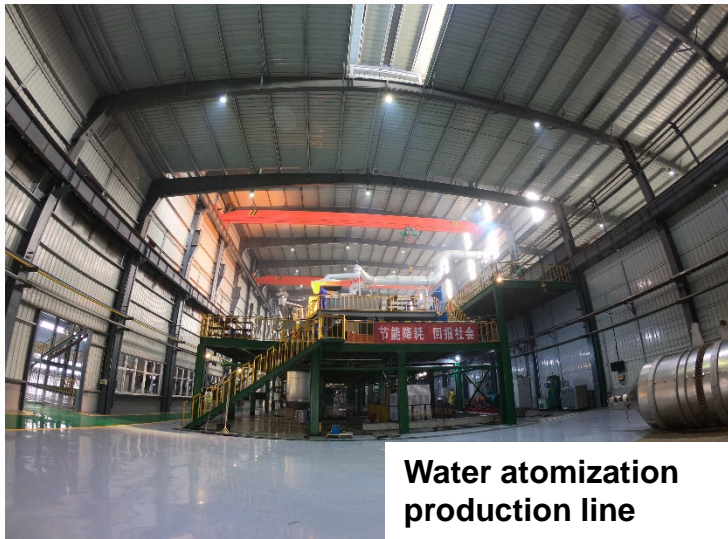


As a leading firm and well known powder supplier in China, ATSP has been engaged in atomized powders over forty years. A set of imported vacuum N₂ (Ar) gas atomizer, several sets of large scale high pressure water atomizers and full testing instruments are well equipped. At present, six categories and over fifty types high quality Fe-base, Ni-base, Co-base, Cu-base and other fine alloy powders are produced, which include: soft magnetic powders, industrial diamond catalyst powders, pre-alloyed matrix powders for diamond tools, ultra-fine stainless steel powders for metal injection moulding (MIM), high speed steel powders, super alloy powders and thermal spray coating powders, and new 3D printing raw powder.





Working Environment



Flagship Product



**soft magnetic
powders**

FeNi50, FeNiMo, FeSi,
FeSiCr, Amorphous,
FeCoNi and so on.



MIM powders

316L, 17-4PH, 440,
304, HK30, 4605, 8620,
F75 and so on.



**Pre-alloyed
matrix powders**

Follow
100/200/400/500,
CuSnMnSi, Brazing
powder and so on.



**High alloy
powders**

CoCrMo, FeCrNiMo,
FeCoCrNiMo,
CoCrNiMo and so on.





More Products

01

PM Powder

316L , 304

04

High Speed Steel

M2 , M3 , T15

02

Thermal Spary Coating

Ni60 , Ni45 , Co-11

05

Super Alloy Powders

IN713 , IN718 , Stellite

03

Porous Metal Materials

Ni60 , Ni45 , Co-11

06

3D and Fuel Cell

316L , CoCr , Ni3Al , Ni4Cr





New Production Line



Add two sets of new gas atomizer line
Each capacity:400tons per year





New MIM Powders



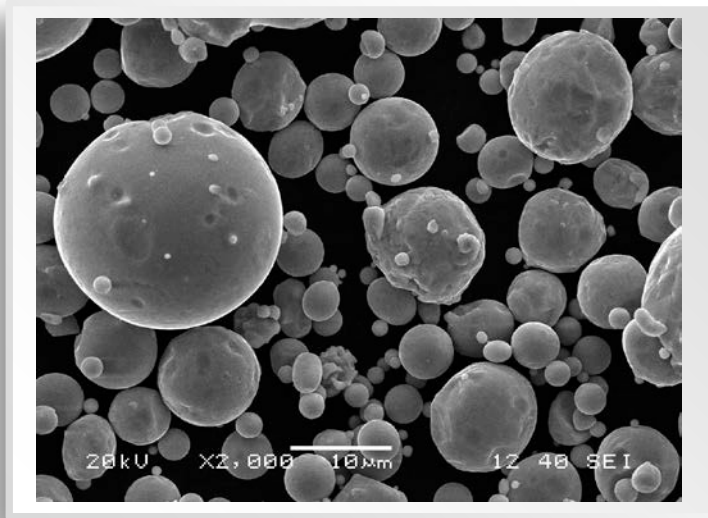
- → 316L Gas
- → 17-4PH Gas
- → 440C-M
- → SS440C
- → 4605 ✓
- → 8620
- → 1J85
- → 4J29
- → F75



New production for MIM in 2017



New MIM Gas Atomized Powders

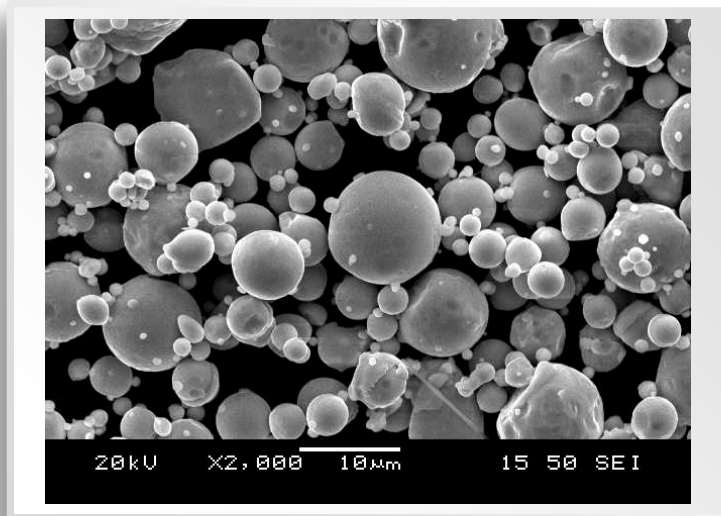


316L Gas

Item	Test datas
D10	5.01 µm
D50	11.86 µm
D90	29.10 µm
A.D.	4.31 g/cm ³
T.D.	5.15 g/cm ³
O.C.	540 PPM



New MIM Gas Atomized Powders

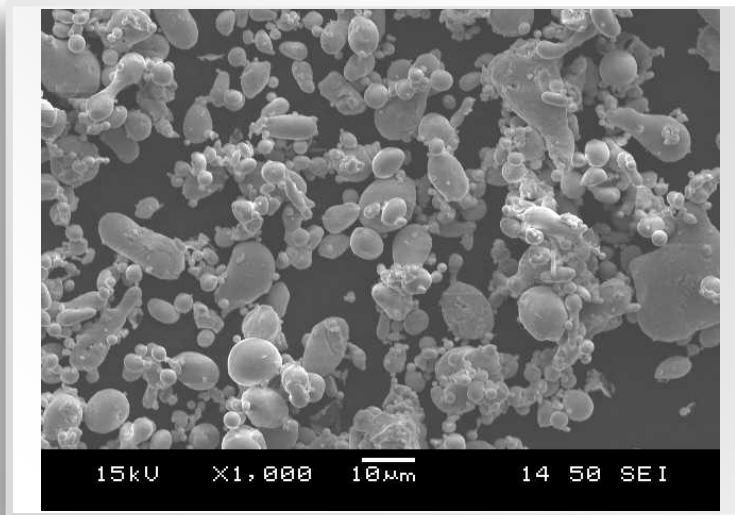


17-4PH Gas

Item	Test datas
D10	4.65 um
D50	12.94 um
D90	29.57um
A.D.	4.24 g/cm3
T.D.	5.01 g/cm3
O.C.	662 PPM



New MIM Water Atomized Powders

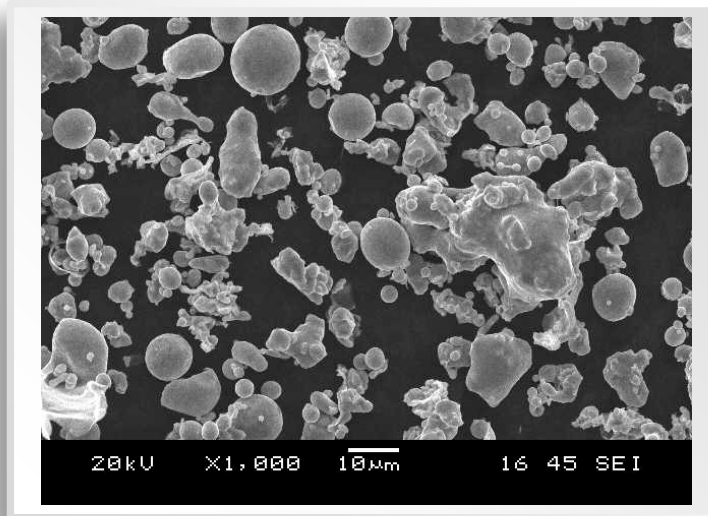


440C-M

Item	Test datas
D10	3.66 um
D50	10.92 um
D90	26.91 um
A.D.	2.81 g/cm ³
T.D.	4.35 g/cm ³
O.C.	1576 PPM

Material	Chemical composition (%)									
	C	Si	Mn	P	S	Ni	Cr	Mo	Nb	Fe
440C-M	1.2-1.4	≤1	≤1.0	≤0.03	≤0.03	≤0.2	16-18	0.4-0.8	--	余

New MIM Water Atomized Powders



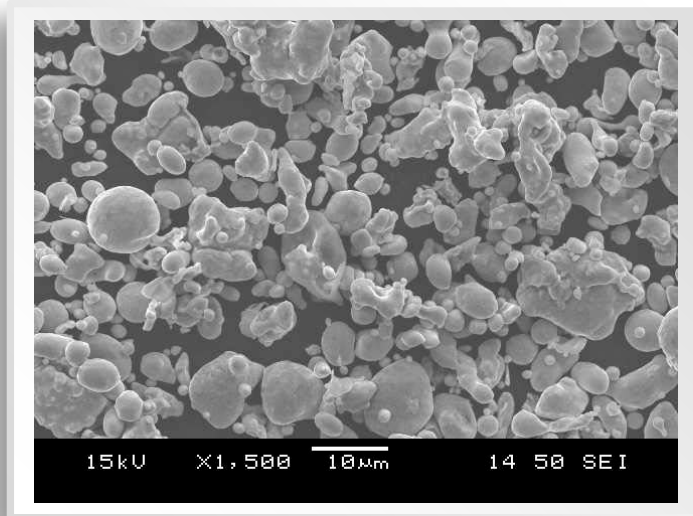
SS440C

Item	Test datas
D10	3.58 um
D50	10.90 um
D90	26.54 um
A.D.	2.77 g/cm3
T.D.	4.31 g/cm3
O.C.	2562 PPM

Material	Chemical composition (%)									
	C	Si	Mn	P	S	Ni	Cr	Mo	Nb	Fe
SS440C	1.0-1.2	≤1	≤1.0	≤0.03	≤0.03	≤0.6	16-18	≤0.75	1.0-2.0	余



New MIM Water Atomized Powders

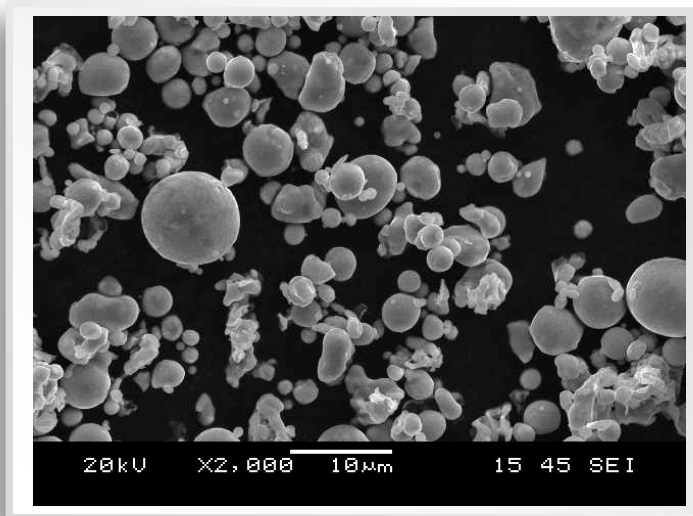


4605

Item	Test datas
D10	3.45 um
D50	10.74 um
D90	25.26 um
A.D.	2.82 g/cm3
T.D.	4.52 g/cm3
O.C.	3380 PPM

Material	Chemical composition (%)							
	C	Si	P	S	Cr	Ni	Mo	Fe
4605	0.4-0.6	≤1.0	≤0.03	≤0.03	--	1.5-2.5	0.2~0.5	balance

New MIM Water Atomized Powders

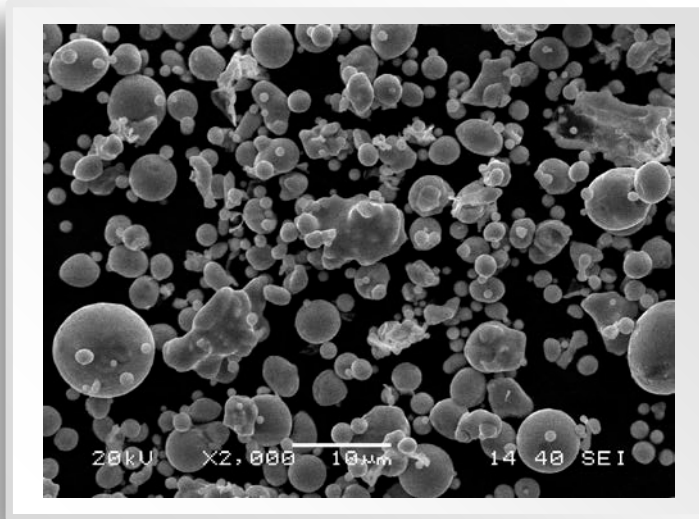


8620

Item	Test datas
D10	3.57 um
D50	10.53 um
D90	24.55 um
A.D.	3.04 g/cm ³
T.D.	4.95 g/cm ³
O.C.	4612 PPM

Material	Chemical composition (%)							
	C	Si	P	S	Cr	Ni	Mo	Fe
8620	0.12-0.23	--	≤0.03	≤0.03	0.4-0.6	0.4-0.7	0.15-0.25	balance

New MIM Water Atomized Powders



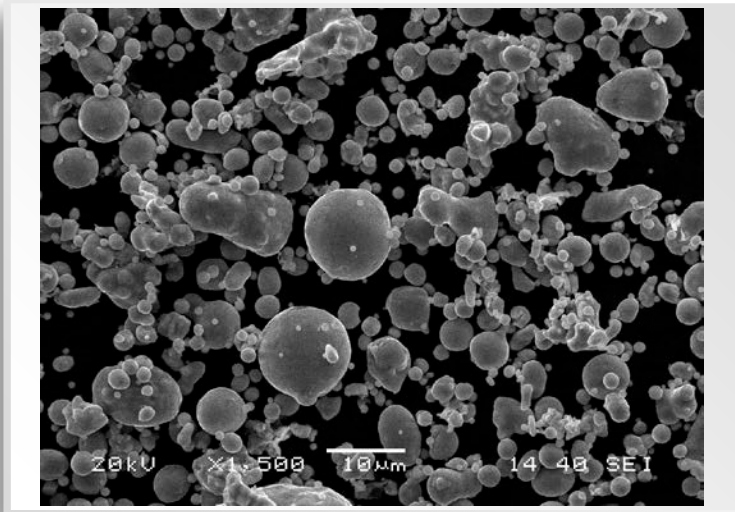
1J85

Item	Test datas
D10	3.14 um
D50	9.61 um
D90	24.89 um
A.D.	3.18 g/cm ³
T.D.	5.18 g/cm ³
O.C.	1782 PPM

Material	Chemical composition (%)										
	C	Si	Mn	P	S	Cu	Cr	Co	Ni	Mo	Fe
1J85	≤0.03	0.15-0.3	0.3-0.6	≤0.02	≤0.02	<0.2	--	--	79-81	4.8-5.2	余



New MIM Water Atomized Powders



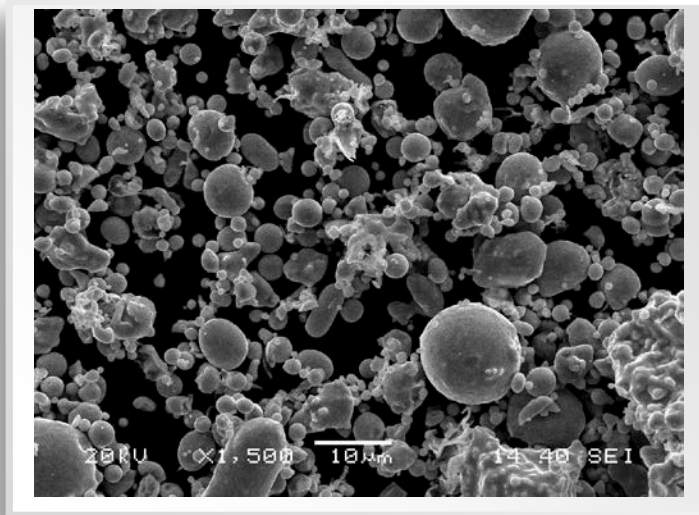
4J29

Item	Test datas
D10	4.48 um
D50	10.69 um
D90	24.48 um
A.D.	3.11 g/cm ³
T.D.	5.15 g/cm ³
O.C.	2950 PPM

Material	Chemical composition (%)										
	C	Si	Mn	P	S	Cu	Cr	Co	Ni	Mo	Fe
4J29	≤0.03	≤0.3	≤0.5	≤0.02	≤0.02	<0.15	<0.2	16-18	28-30	<0.2	余



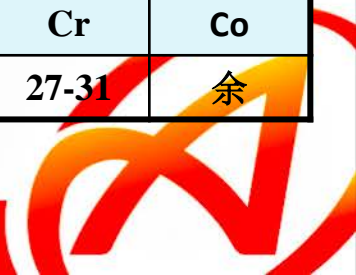
New MIM Water Atomized Powders



F75

Item	Test datas
D10	2.94 um
D50	9.24 um
D90	23.92 um
A.D.	3.08 g/cm ³
T.D.	5.05 g/cm ³
O.C.	3233 PPM

Material	Chemical composition (%)									
	C	Si	Mn	P	S	W	Ni	Mo	Cr	Co
F75	≤0.35	≤1.0	≤1.0	≤0.02	≤0.01	≤0.2	≤0.5	5-7	27-31	余





Total Capacity



**4 gas atomization
production line**
Capacity 150 ~ 500kg
**Annual production
capacity 2000 tons**



**8 water
atomization
production line**
Capacity 150 ~ 500kg
**Annual production
capacity 5000 tons**



Thanks for Your Kind
Attention.

